


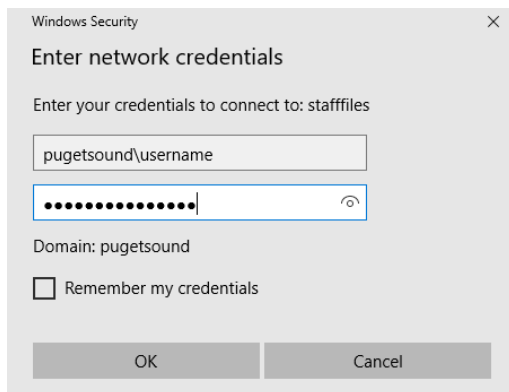
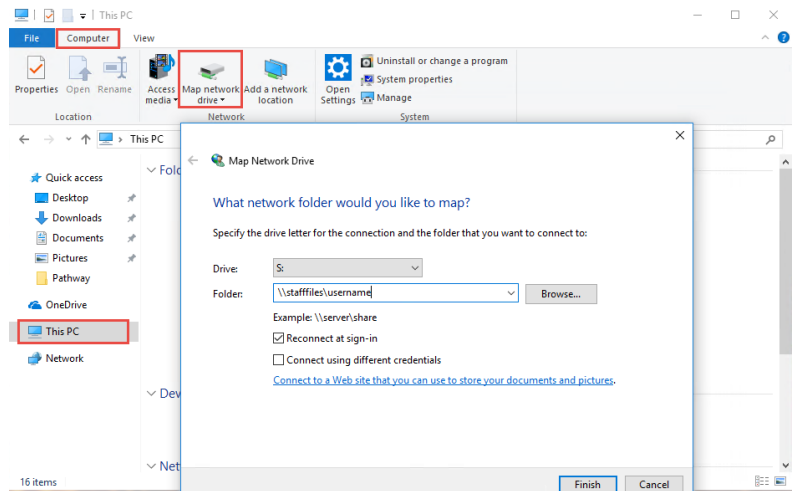
Mapping to a Network Share Windows 10

How to Access your Puget Sound Network Share

Windows 10 Instructions

1. In File Explorer (), click **This PC**.
2. Select **Computer** from the top ribbon.
3. Click **Map Network Drive**.
4. In the **Folder** field, enter the name of the network share you would like to map to.

Note: your computer should automatically assign an unused drive letter



Note: Select **Connect using different credentials** if you are accessing your network share using a Windows device not bound to the Puget Sound domain (e.g. a personal non-university owned computer)

When prompted for your username, type **pugetsound\username** and then enter your domain password.

Network Share Name Key:

Faculty	\\FacultyFiles\username
Staff	\\StaffFiles\username
Students	\\StudentFiles\username
Other Network Share	\\FacultyFiles\sharename or \\StaffFiles\sharename

5. Make sure **Reconnect at sign-in** is selected.
6. Click **Finish**.



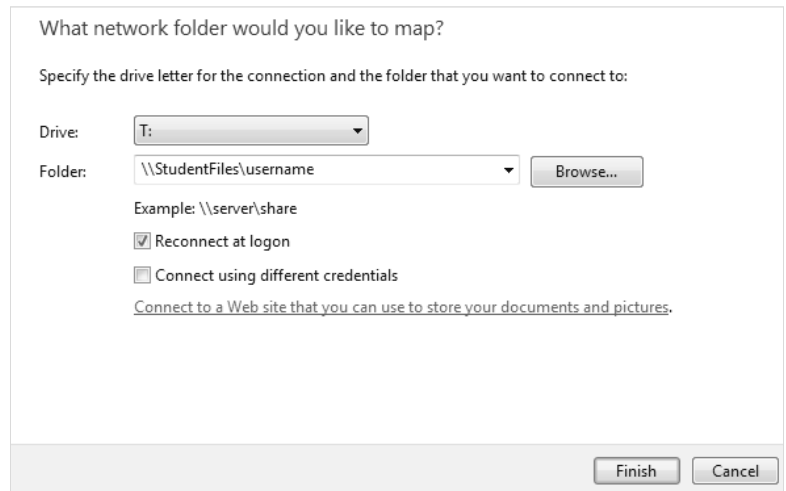
Mapping to a Network Share Windows 7

How to Access your Puget Sound Network Share

Windows 7 Instructions

1. Under the **Start** menu, select **Computer**.
2. Select **Map Network Drive** in the menu's toolbar.
3. In the **Folder** field, enter the name of the network share you would like to map to.

Note: your computer should automatically assign an unused drive letter



What network folder would you like to map?

Specify the drive letter for the connection and the folder that you want to connect to:

Drive:

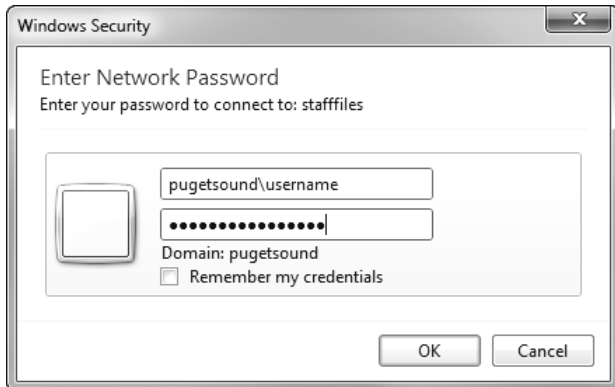
Folder:

Example: \\server\share

Reconnect at logon

Connect using different credentials

[Connect to a Web site that you can use to store your documents and pictures.](#)



Windows Security

Enter Network Password

Enter your password to connect to: stafffiles

Domain: pugetsound

Remember my credentials

Note: Select **Connect using different credentials** if you are accessing your network share using a Windows device not bound to the Puget Sound domain (e.g. a personal non-university owned computer)

When prompted for your username, type **pugetsound\username** and then enter your domain password.

Network Share Name Key:

Faculty	\\FacultyFiles\username
Staff	\\StaffFiles\username
Students	\\StudentFiles\username
Other Network Share	\\FacultyFiles\sharename or \\StaffFiles\sharename

4. Make sure **Reconnect at Logon** is selected.
5. Click **Finish**.

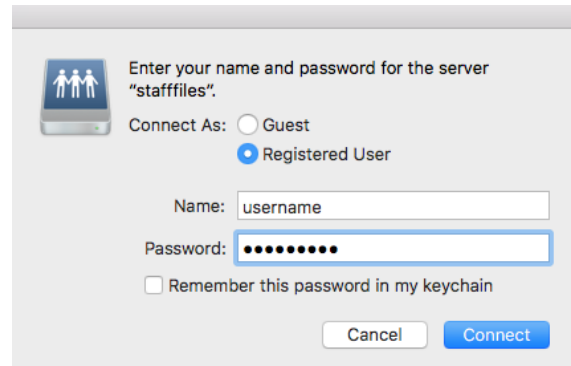
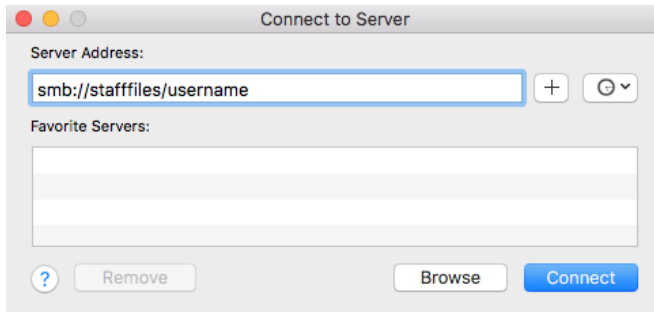


Mapping to a Network Share Mac OS

How to Access your Puget Sound Network Share

Mac Instructions

1. Click on your desktop wallpaper to ensure that the menu you are accessing is for your computer and not for any programs you may be running.
2. In the menu bar at the top of your computer screen, select **Go**. Then, select **Connect to Server**.
3. In the **Server Address** field, enter the network share you would like to map to.



4. Click **Connect**.
5. Enter your Puget Sound username in the **Name** field then enter your password.

Network Share Name Key:

Faculty	smb://FacultyFiles/username
Staff	smb://StaffFiles/username
Students	smb://StudentFiles/username
Other Network Share	smb://FacultyFiles/sharename or smb://StaffFiles/sharename

Note: Each time you wish to connect to your network share, you will need to engage in the steps outlined above. Your frequently visited network shares can be saved in the **Favorite Servers** section of the **Connect to Server** menu by clicking the plus (+) button.

Once you have connected to the server you can also drag the following icon from your desktop to your dock, which will allow for easier access in the future.

